

## NEOK ASHRAE chapter's presidents.

**A. D. "Ike" Holmes** a charter member served as the **second president 1950/51**. Ike was a partner with his brother with Plumbing Supply Company of Tulsa and was known for carrying the largest supply of oddball pipe and fittings in Tulsa.

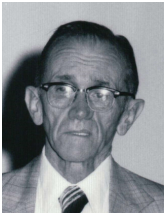


**R. F. Shoemaker** a charter member served as the **third president 1951/52**. Richard joined his father Forrest Shoemaker, in the air conditioning company in 1946 with a B.S. in Mechanical Engineering from Purdue University and obtained his P.E. in 1963. Richard's son Rick Jr. third generation is active in the family business still today. *(Life Member)*

**Clarence H. Dollmeyer** a charter member served as the **fourth president in 1952/53** and again in **1957/58**. To date he is the second president to have served two terms. Clarence was the first president to have a social hour before the meeting started. Clarence was with Collins and Gould Engineering in 1952, he later joined Black and West Architects in 1954 than joined the firm of Netherton, Dollmeyer and Solnox in 1956. Clarence later joined the Benham Group and Decision Engineering in Edmond Oklahoma.



**J. Neal Watt** a charter member served as the **fifth president in 1953/54**. Neal graduated from Oklahoma University in 1947 and joined the company business of Watt Plumbing Company. The company later expanded into a full-service HVAC Mechanical Contractor. Neal's son Alan joined the company in 1976 and joined ASHRAE. Neal sold the company and started a consulting firm of J. Neal Watt & Associates. *(Life Member)*



**R. W. Winget** a charter member served as the **sixth president in 1954/55**. Pete joined the O'Conner Company in 1937 in Wichita KS and moved to Tulsa with the company in 1945. Pete retired from O'Conner Oklahoma Company in 1977 as president. Pete was highly active in the HVAC work in Tulsa during his time here. The chapter had grown to sixty members and was meeting at the University of Tulsa. *(Life Member)*



**J. T. McKinney** served as the **seventh president 1955/56**. Jim joined Process Equipment Company in 1952 and moved to Oklahoma City with Process Equipment in 1956. Jim also served as the president of the Central Oklahoma ASHRAE chapter in 1962. Jim returned to Tulsa in 1973 with Process until his retirement. This was about the time our chapter was changed to ASHRAE. *(Life Member)*

**W. H. Meinholtz** served as the chapter **eighth president in 1956/57**. “Meinie” was a manufacturer representative in Tulsa for several years for York Refrigeration Company. He later moved to Oklahoma City with the Swanda Brothers. “Meinie” passed away a short time later and a Meinholtz Memorial Scholarship Fund was established in our chapter in February 1959.

**Clarence H. Dollmeyer** a charter member served as the **ninth president in 1957/58**. To date he is the second president to have served two terms. Clarence was the first president to have a social hour before the meeting started. Clarence was with Collins and Gould Engineering in 1952, he later joined Black and West Architects in 1954 than joined the firm of Netherton, Dollmeyer and Solnox in 1956. Clarence later joined the Benham Group and Decision Engineering in Edmond Oklahoma.

**Jim C. Chase** served as our chapter’s **tenth president in 1958/59**. Jim moved to Tulsa in 1953 and worked for Process Equipment Company until 1966. He then started the Jim Chase Company, Inc., which dealt with power plants and refinery work.



**Jack E. Tumilty** served as the chapter **eleventh president in 1959/60**. This was the year ASHAE became ASHRAE and Region VIII was established. Jack graduated from OU in 1948 with a BSME and became a PE a short time later. He moved around and worked for several companies before moving back to OKC and joined Collins Engineering & Associates in 1951. In 1952 Jack moved to Tulsa and opened the Tulsa branch of Collins, and later appointed as Vice President in charge of the Tulsa office. Jack served as chairman for the ASHRAE Standard 90 from 1974 to 1980 and has received many awards including Distinguished Fellow, Distinguished Service, Regional Merit, Chapter Service, 50 year and life member. Our chapter established a Jack Tumilty Scholarship in his honor. *(Life Member)*